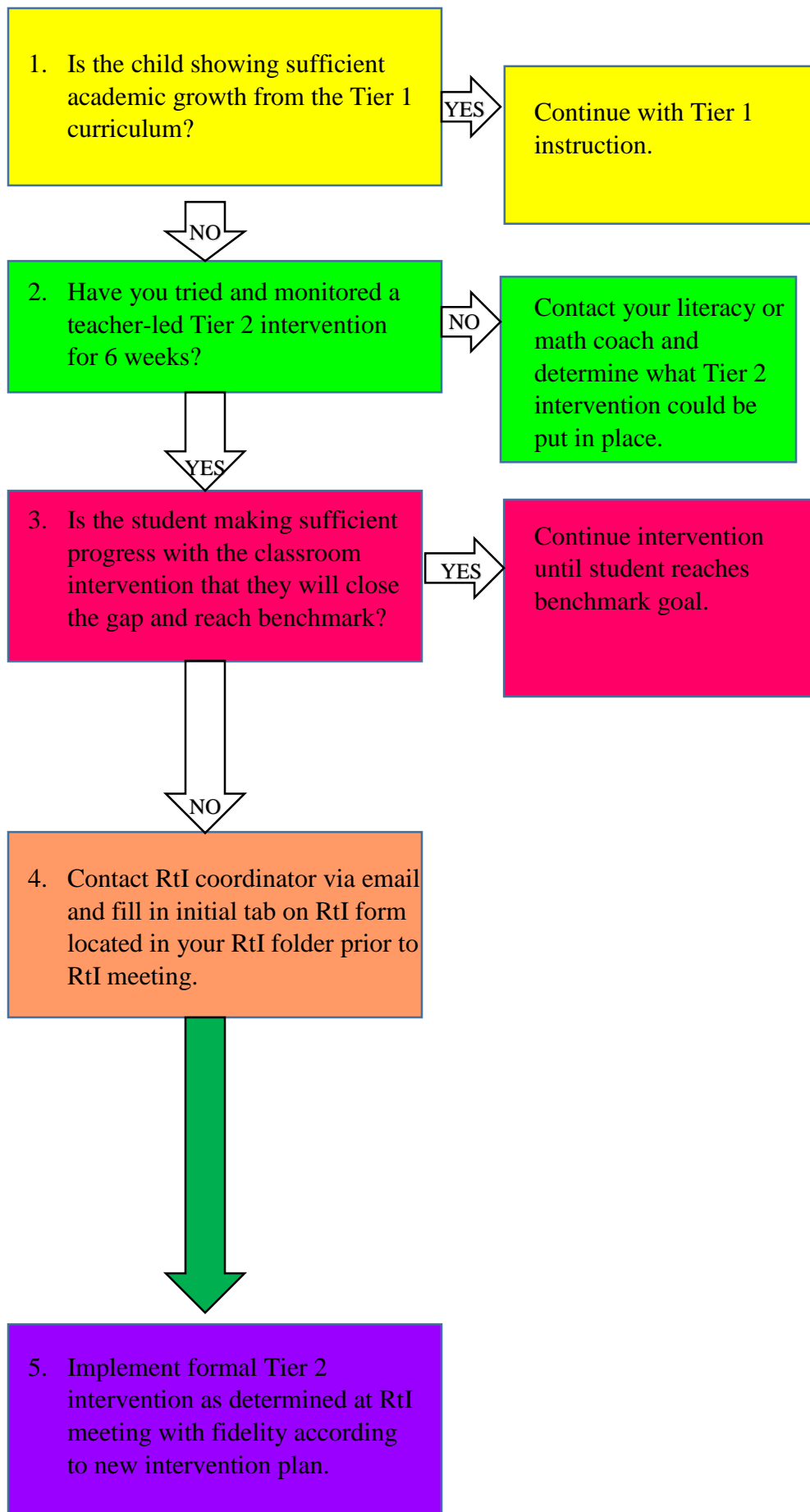


## Pathway to RtI Decision-Making Flowchart



## Guiding Questions

How did the student score on school-wide screeners? (Beginning of Year MClass, STAR, and iReady tests)

Possible interventions may be to increase iReady time or target specific reading skill(s) during small group in workshop model.

Check with all stakeholders (ELL, reading, etc...) who may have input on growth. Look at updated running record levels, iReady growth, etc...)